

# STANDARD B-4 BOLLARD

## TOPS AVAILABLE

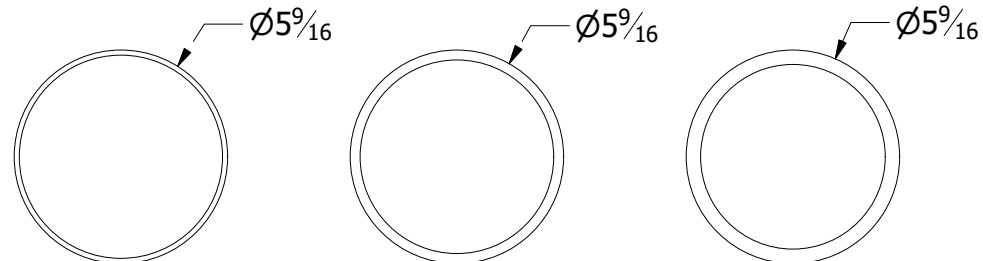
APPROVAL:

Signature authorizes Tournesol Siteworks to manufacture the product as shown

### SIZE AND THICKNESS

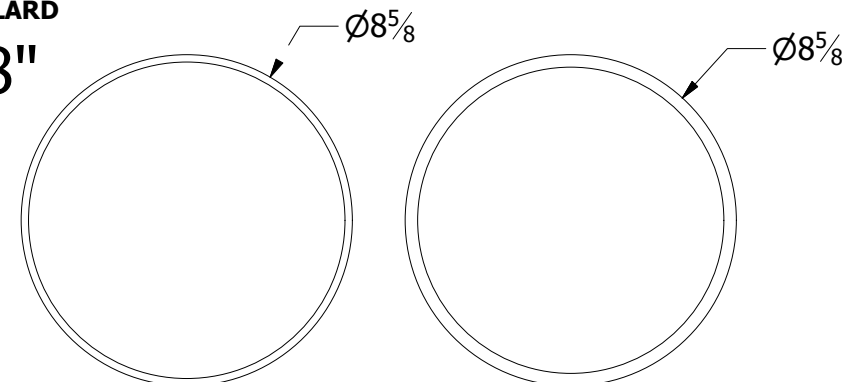
ALL STANDARD BOLLARDS MADE IN POWDER-COATED MILD STEEL W/ZINC-RICH PRIMER

BOLLARD  
6"



5" SCH 10 MS     5" SCH 40 MS     5" SCH 80 MS

BOLLARD  
8"

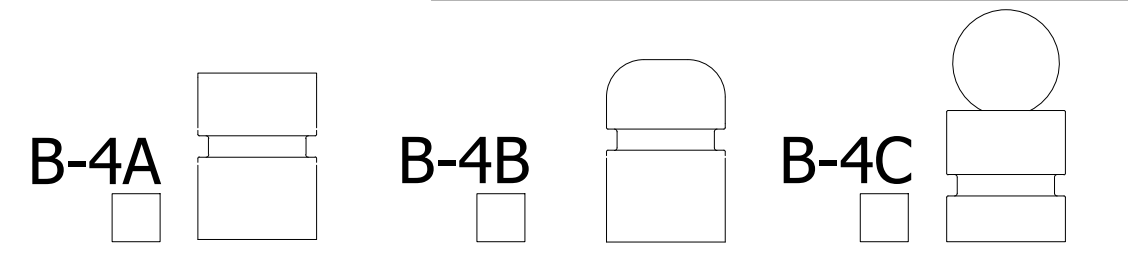


8" .188" MS     8" SCH 40 MS

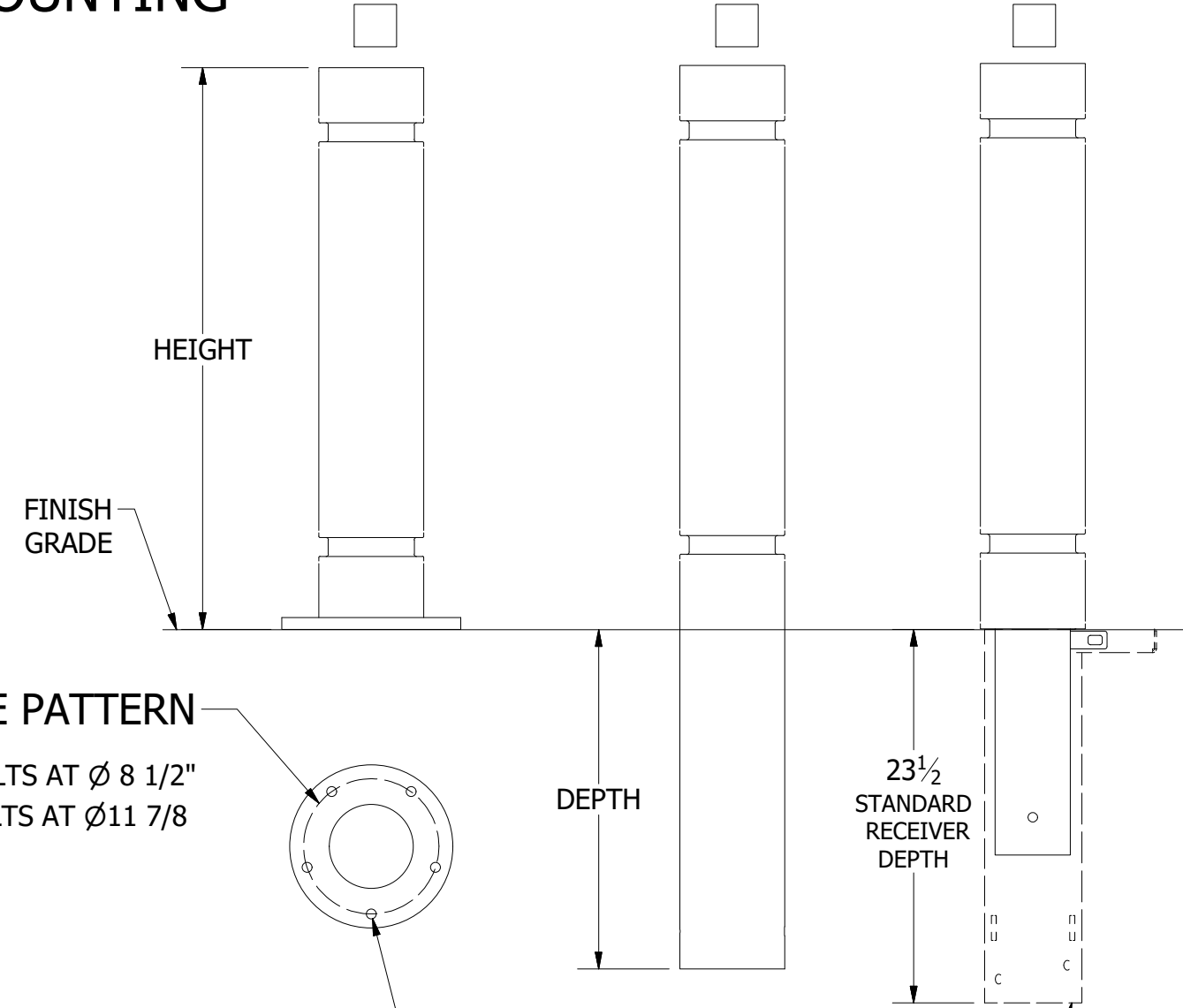
### HEIGHT

- 30"
- 36"
- 42"
- 48"
- CUSTOM  
(SEE PAGE 2)

### MOUNTING

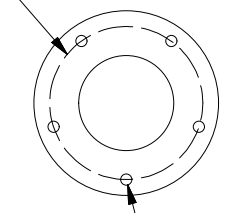


SURFACE MOUNT (SM)    EMBED    REMOVABLE (REM)



### HOLE PATTERN

6" BOLLARD = 5 BOLTS AT Ø 8 1/2"  
8" BOLLARD = 5 BOLTS AT Ø 11 7/8



### STANDARD DEPTH

6" REM BOLLARD = 12" DEEP  
6" EMBED BOLLARD = 18" DEEP  
8" BOLLARD = 18" DEEP

CUSTOM (SEE PAGE 2)

COMPANY NAME: \_\_\_\_\_  
 CLIENT NAME: \_\_\_\_\_  
 DATE: \_\_\_\_\_  
 QUANTITY: \_\_\_\_\_  
 COLOR/FINISH: \_\_\_\_\_

EXCEPT FOR REPLACEMENTS, ALL REMOVEABLE BOLLARDS REQUIRE A RECEIVER (SOLD SEPARATELY), INQUIRE FOR DETAILS.

# B-4 BOLLARD OPTIONS

(FOR FURTHER CUSTOMIZATION, CONTACT YOUR SALES PERSON)

**APPROVAL:**

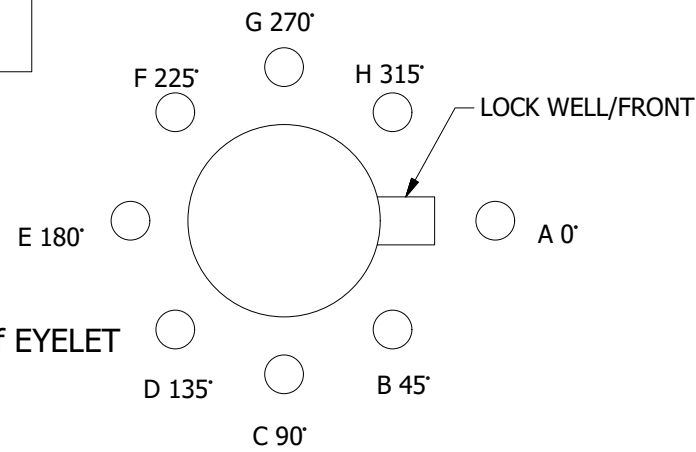
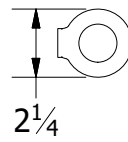
Signature authorizes Tournesol Siteworks to manufacture the product as shown

## EYELET (B-EB) (IF NONE WANTED LEAVE BLANK)

Quantity: \_\_\_\_\_ Number of EYELETS

Placement: \_\_\_\_\_ " Height from the ground to the center of EYELET

Orientation(s): Shade in bubbles to indicate position



B-HTG \_\_\_\_\_ (IN)  
(CUSTOM HEIGHT)

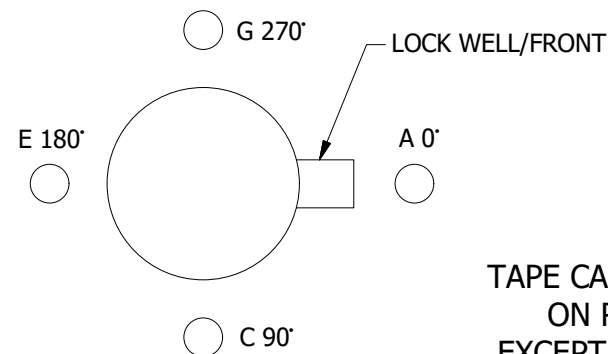
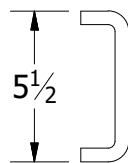
## HANDLE (B-HD) (IF NONE WANTED LEAVE BLANK)

**CHOOSE HOW MANY**

1 HANDLE  2 HANDLES

Placement: \_\_\_\_\_ " Height from the ground to the center of HANDLE

Orientation(s): Shade in bubbles to indicate position



B-EXT \_\_\_\_\_ (IN)  
(CUSTOM DEPTH)  
(FOR EMBED OR REM)

## TAPE (B-TAPE) (IF NONE WANTED LEAVE BLANK)

**CHOOSE A WIDTH**

1" TAPE  2" TAPE OTHER SIZES AVAILABLE

**CHOOSE A COLOR**

HIGH INTENSITY IN  RED  WHITE  YELLOW

ADDITIONAL ROW OF TAPE

Width \_\_\_\_\_

Type \_\_\_\_\_

Color \_\_\_\_\_

Placement \_\_\_\_\_ "

ADDITIONAL ROW OF TAPE

Width \_\_\_\_\_

Type \_\_\_\_\_

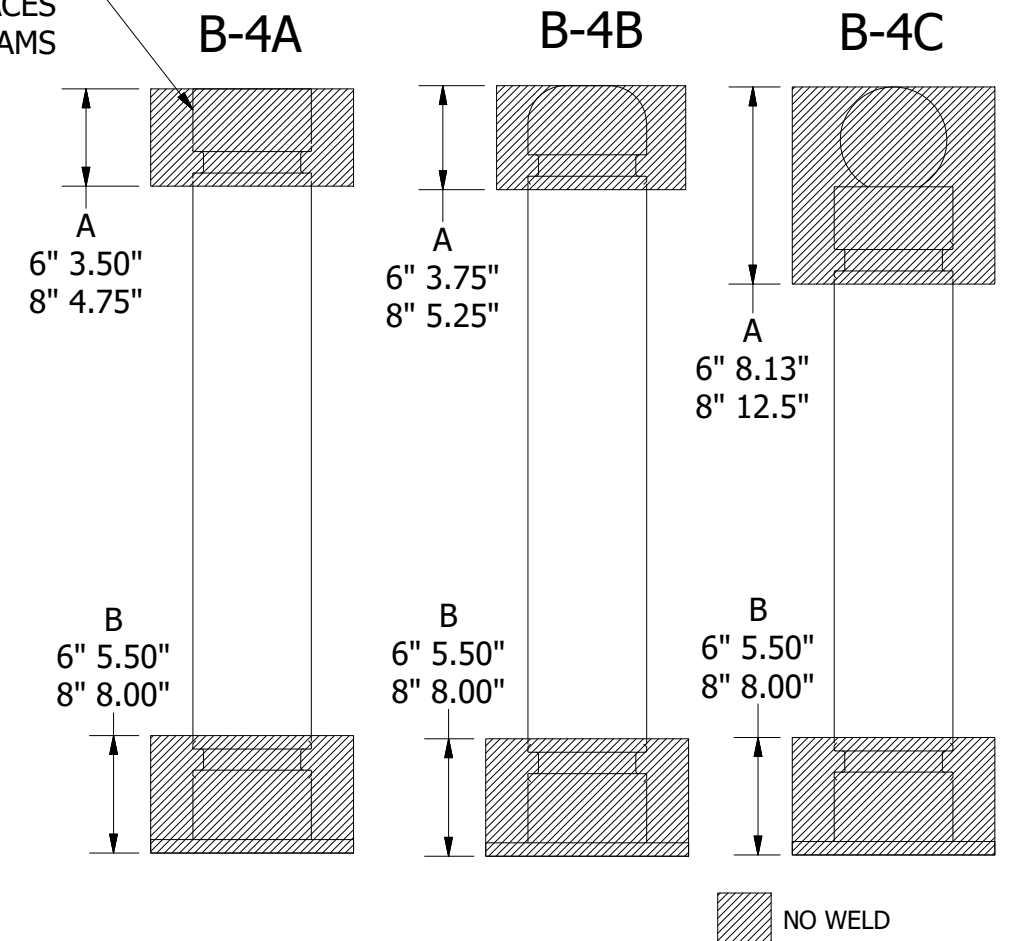
Color \_\_\_\_\_

Placement \_\_\_\_\_ "

B-4 BOLLARDS CAN HAVE 1" TAPE IN REVEAL

Placement: \_\_\_\_\_ " Height from the ground to the center of TAPE

TAPE CAN BE PLACED ON ROUND FACES EXCEPT WELD SEAMS



(IF NONE WANTED LEAVE BLANK)

## ADD REVEAL (B-ARC)

Ⓞ ADD REVEAL(S) AT

\_\_\_\_\_ " FROM THE GROUND (4)

\_\_\_\_\_ " FROM THE GROUND (5)

\_\_\_\_\_ " FROM THE GROUND (6)

## REMOVE REVEAL (B-RRC)

Ⓞ REMOVE REVEAL(S)

REMOVE REVEAL 1

REMOVE REVEAL 2

COMPANY NAME: \_\_\_\_\_  
CLIENT NAME: \_\_\_\_\_  
DATE: \_\_\_\_\_  
QUANTITY: \_\_\_\_\_  
COLOR/FINISH: \_\_\_\_\_